

Ohio Department of Aging and Ohio National Guard **Affordable Senior Housing Vaccinations**



MIKE DEWINE
GOVERNOR OF OHIO

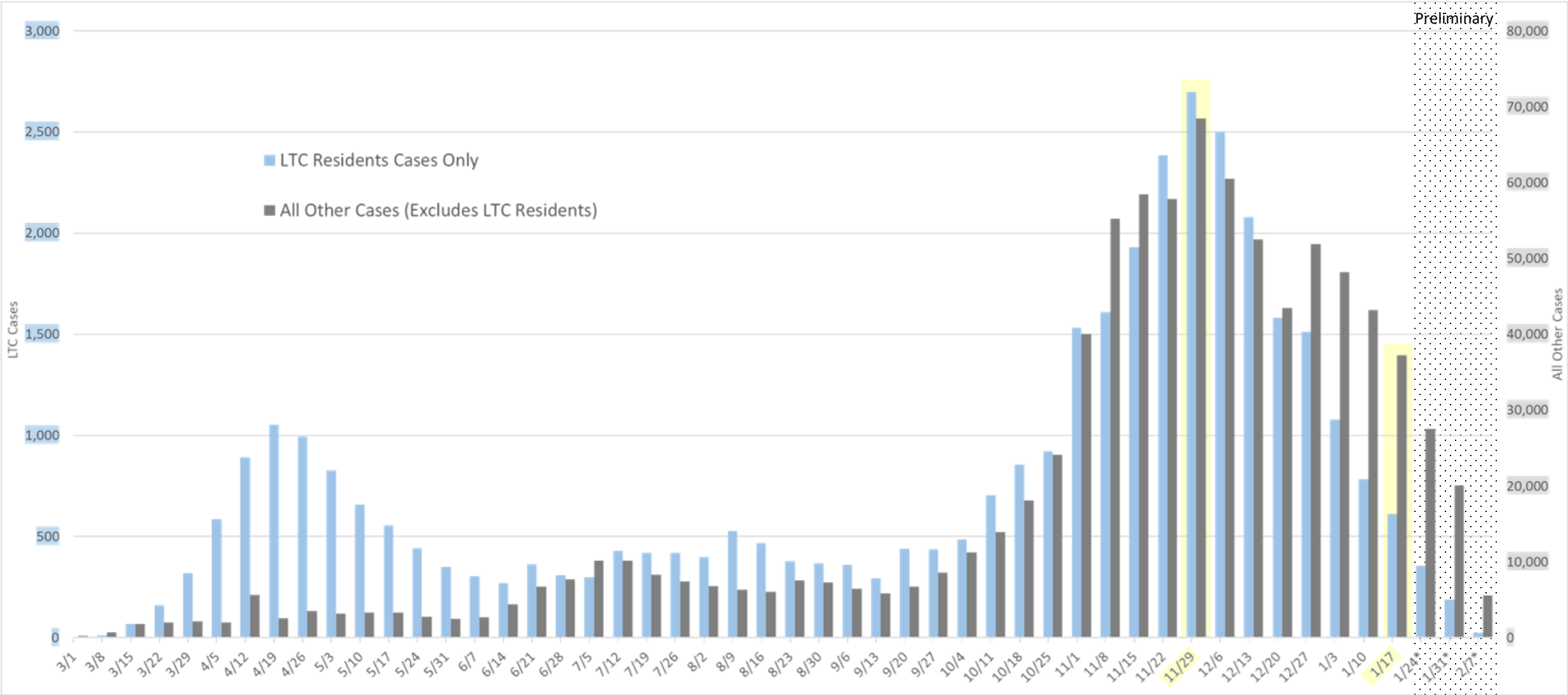


Department
of Health

coronavirus.ohio.gov



COVID-19 | Long-Term Care Facility Cases vs. All Other Cases

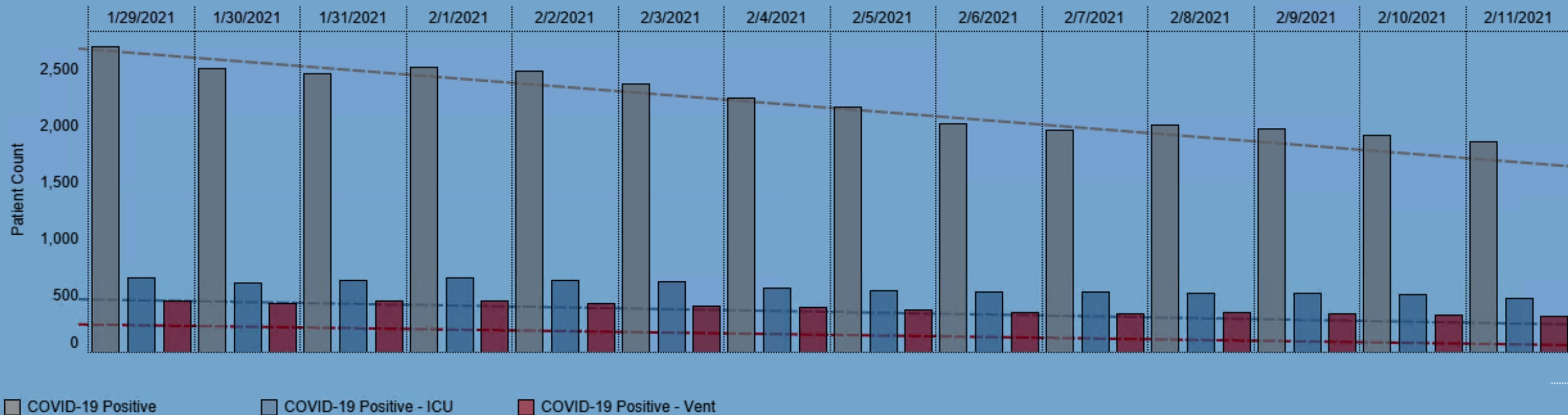


	LTC Resident Cases	All Other Cases (Excludes LTC Residents)
Week of 11/29/2020	2,697	68,415
Week of 1/17/2021	612	37,233
% Change	-77.3%	-45.6%

*Data as of 02/10/2021.

Current Confirmed COVID - 19 Patient Count in Ohio Hospitals by Day *

2,705 2,513 2,461 2,519 2,486 2,380 2,251 2,172 2,026 1,969 2,011 1,980 1,924 1,862



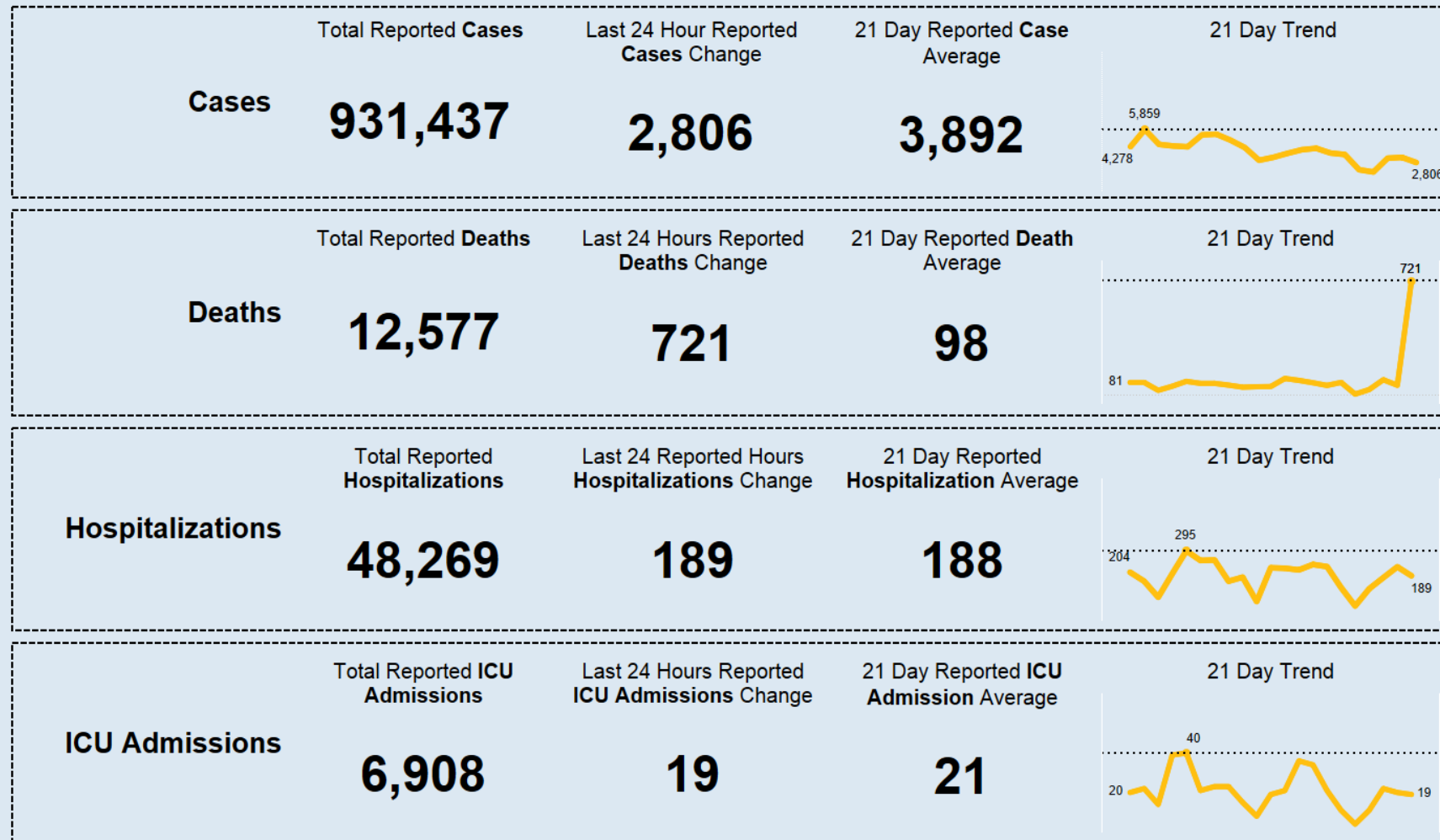
School Model Status Update

Model Type	Number of Districts	Percentage of Districts	Number of Students	Percentage of Students
Full In-Person	401	65.8%	740,278	48.8%
Partial In-Person	177	29.1%	587,756	38.7%
Full Remote	31	5.1%	189,224	12.5%
Total	609	100.0%	1,517,258	100.0%

As of
February 10th

COVID - 19 | Key Indicators

Last Updated: 02-11-21



All dates are based when an indicator is reported and will not match data in other COVID-19 dashboards provided by the Ohio Department of Health. All other dashboards are based on onset date, date of hospitalization, or date of death.

Note: Totals include Confirmed and CDC Expanded Case Definition (Probable)

ODH is currently reconciling COVID-19 deaths, including about 650 in today's count. This primarily impacts deaths occurring from November to December 2020. Deaths here are shown by the date the death was reported. Newly reported deaths will be higher during the next few days as ODH completes this reconciliation.



Department
of Health

All 88 Ohio Counties Ranked by Highest Occurrence COVID-19 Cases

The 14-day period used for this table covers data from Jan. 27 to Feb. 9. The data were pulled on Feb. 10 and exclude incarcerated individuals.
Shaded counties meet the Centers for Disease Control and Prevention definition of "high incidence" of COVID-19.

COUNTY	Cases Per 100K (01/27 to 02/09)	Case Count (01/27 to 02/09)	POPULATION	COUNTY	Cases Per 100K (01/27 to 02/09)	Case Count (01/27 to 02/09)	POPULATION	COUNTY	Cases Per 100K (01/27 to 02/09)	Case Count (01/27 to 02/09)	POPULATION	COUNTY	Cases Per 100K (01/27 to 02/09)	Case Count (01/27 to 02/09)	POPULATION
Brown	697.6	303	43,432	Lorain	376.7	1,167	309,833	Cuyahoga	304.9	3,766	1,235,072	Ross	250.4	192	76,666
Clinton	571.9	240	41,968	Delaware	373.8	782	209,177	Defiance	304.6	116	38,087	Carroll	248.9	67	26,914
Pike	500.5	139	27,772	Miami	359.9	385	106,987	Knox	301.7	188	62,322	Crawford	248.2	103	41,494
Muskingum	498.8	430	86,215	Stark	345.4	1,280	370,606	Columbiana	297.4	303	101,883	Hancock	246.8	187	75,783
Highland	479.6	207	43,161	Lake	341.1	785	230,149	Montgomery	297.4	1,581	531,687	Trumbull	246.0	487	197,974
Athens	477.6	312	65,327	Summit	338.8	1,833	541,013	Preble	296.0	121	40,882	Champaign	241.7	94	38,885
Adams	469.3	130	27,698	Portage	336.7	547	162,466	Morrow	288.7	102	35,328	Guernsey	236.7	92	38,875
Hamilton	468.5	3,830	817,473	Logan	332.8	152	45,672	Monroe	285.6	39	13,654	Mercer	230.7	95	41,172
Hardin	455.9	143	31,365	Fulton	332.3	140	42,126	Huron	284.9	166	58,266	Seneca	230.2	127	55,178
Pickaway	455.0	266	58,457	Mahoning	329.3	753	228,683	Jefferson	284.7	186	65,325	Tuscarawas	228.3	210	91,987
Meigs	454.0	104	22,907	Henry	322.2	87	27,006	Darke	279.8	143	51,113	Scioto	225.7	170	75,314
Warren	451.4	1,059	234,602	Richland	319.4	387	121,154	Allen	279.4	286	102,351	Sandusky	223.9	131	58,518
Perry	434.5	157	36,134	Medina	319.3	574	179,746	Paulding	278.5	52	18,672	Coshocton	213.1	78	36,600
Butler	433.0	1,659	383,134	Van Wert	318.3	90	28,275	Wayne	278.3	322	115,710	Williams	212.6	78	36,692
Fayette	427.7	122	28,525	Marion	318.0	207	65,093	Jackson	277.7	90	32,413	Wyandot	211.3	46	21,772
Clermont	421.0	869	206,428	Lucas	313.3	1,342	428,348	Madison	277.2	124	44,731	Ottawa	202.3	82	40,525
Greene	410.8	694	168,937	Franklin	313.0	4,122	1,316,756	Ashtabula	271.5	264	97,241	Ashland	201.9	108	53,484
Washington	388.9	233	59,911	Harrison	312.5	47	15,040	Morgan	268.8	39	14,508	Shelby	197.6	96	48,590
Lawrence	386.8	230	59,463	Hocking	311.4	88	28,264	Wood	266.0	348	130,817	Putnam	194.9	66	33,861
Geauga	382.3	358	93,649	Gallia	311.1	93	29,898	Clark	260.3	349	134,083	Vinton	183.4	24	13,085
Fairfield	378.9	597	157,574	Auglaize	308.8	141	45,656	Union	250.9	148	58,988	Noble	166.4	24	14,424
Licking	377.1	667	176,862	Belmont	305.9	205	67,006	Erie	250.5	186	74,266	Holmes	152.4	67	43,960



MIKE DEWINE
GOVERNOR OF OHIO



Department
of Health

coronavirus.ohio.gov

Top 20 Ohio Counties Ranked by Highest Occurrence

COVID-19 Cases

The 14-day period used for this table covers data from Jan. 27 to Feb. 9. The data were pulled on Feb. 10 and exclude incarcerated individuals.

COUNTY	Cases Per 100K (01/27 to 02/09)	Case Count (01/27 to 02/09)	POPULATION
Brown	697.6	303	43,432
Clinton	571.9	240	41,968
Pike	500.5	139	27,772
Muskingum	498.8	430	86,215
Highland	479.6	207	43,161
Athens	477.6	312	65,327
Adams	469.3	130	27,698
Hamilton	468.5	3,830	817,473
Hardin	455.9	143	31,365
Pickaway	455.0	266	58,457
Meigs	454.0	104	22,907
Warren	451.4	1,059	234,602
Perry	434.5	157	36,134
Butler	433.0	1,659	383,134
Fayette	427.7	122	28,525
Clermont	421.0	869	206,428
Greene	410.8	694	168,937
Washington	388.9	233	59,911
Lawrence	386.8	230	59,463
Geauga	382.3	358	93,649



MIKE DEWINE
GOVERNOR OF OHIO



Department
of Health

coronavirus.ohio.gov

Ohio Public Health Advisory System

LEVEL 1

Public Emergency

Active exposure and spread.

LEVEL 2

Public Emergency

Increased exposure and spread.

LEVEL 3

Public Emergency

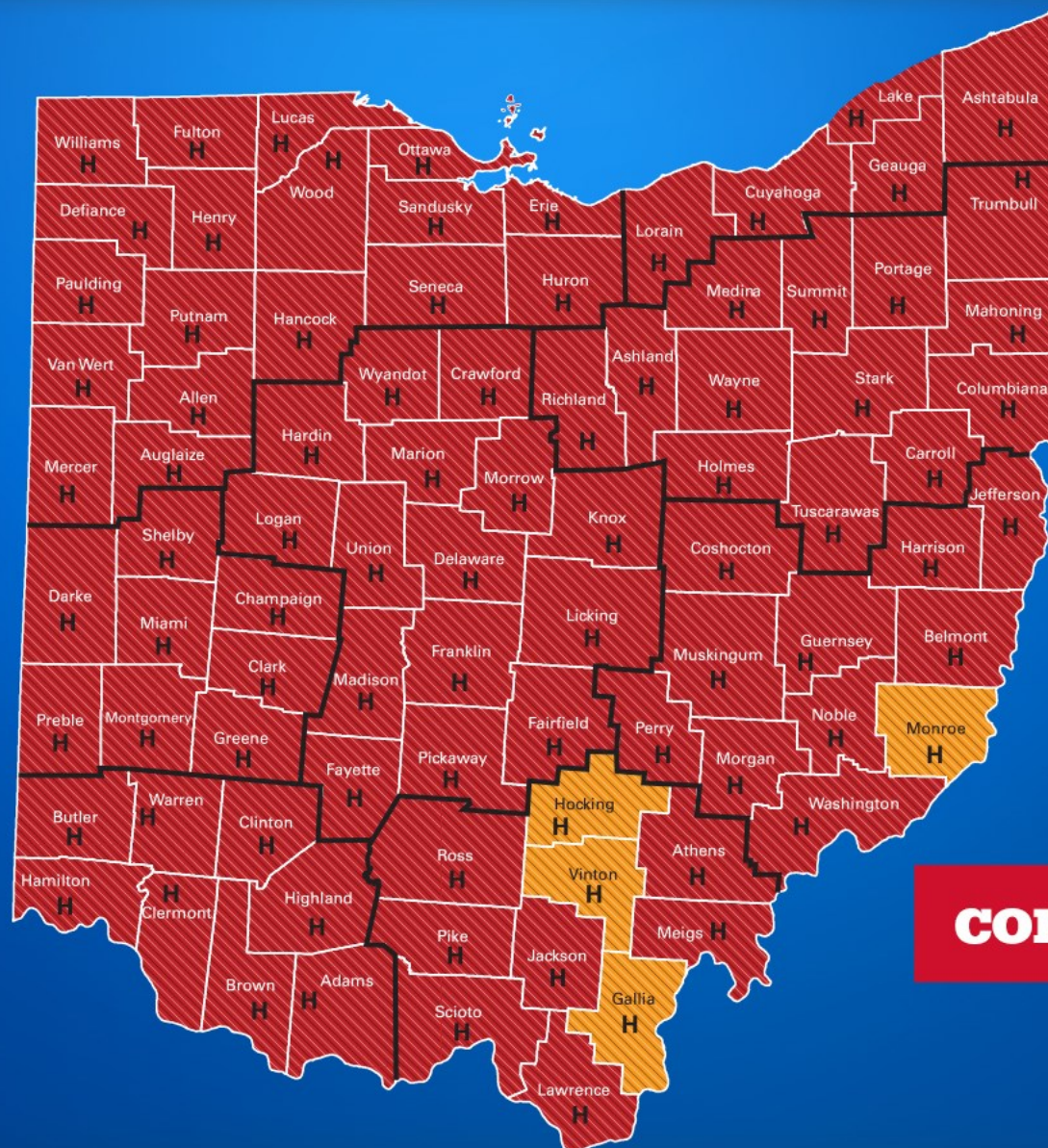
Very high exposure and spread.

LEVEL 4

Public Emergency

Severe exposure and spread.

As of
2/11/2021



High Incidence



Indicates a county
approaching Level 4

coronavirus.ohio.gov



Department
of Health



Ohio's Vaccination Program

Phase 1B

Ohioans born with or who have early childhood conditions that are carried into adulthood, which put them at higher risk for adverse outcomes due to COVID-19.

The following group of Ohioans are included, even though they are not age 65 and older, because they were born with or developed in childhood a severe condition that puts them at very high risk for dying from COVID-19.

- Sickle cell anemia
- Down syndrome
- Cystic fibrosis
- Muscular dystrophy
- Cerebral palsy
- Spina bifida
- People born with severe heart defects requiring regular specialized medical care.
- People with severe type 1 diabetes, who have been hospitalized for this in the past year.
- Phenylketonuria (PKU), Tay-Sachs and other rare, inherited metabolic disorders.
- Epilepsy with continuing seizures; hydrocephaly; microcephaly; and other severe neurological disorders.
- Turner syndrome, fragile X syndrome, Prader-Willi syndrome, and other severe genetic disorders.
- People with severe asthma, who have been hospitalized for this in the past year.
- Alpha and beta thalassemia
- Solid organ transplant candidates and recipients.



MIKE DEWINE
GOVERNOR OF OHIO



Department
of Health

coronavirus.ohio.gov